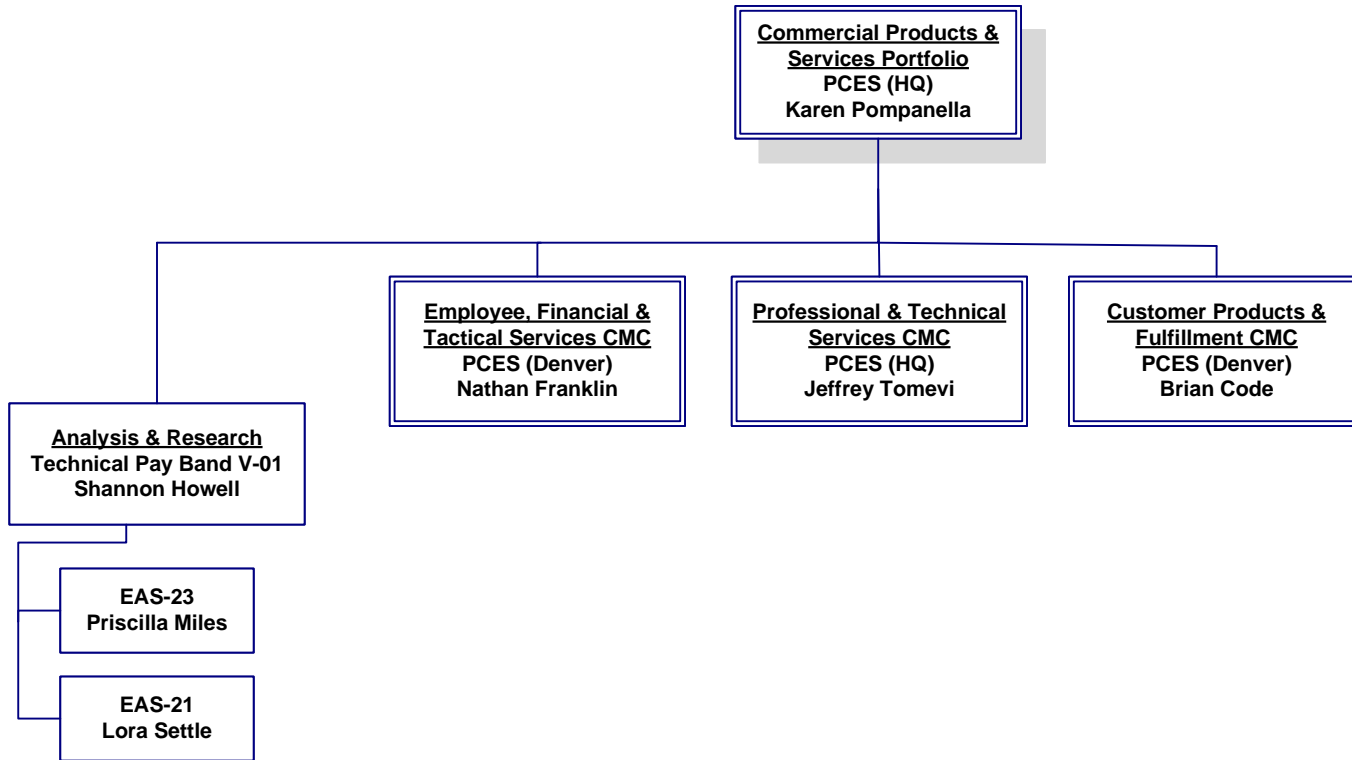


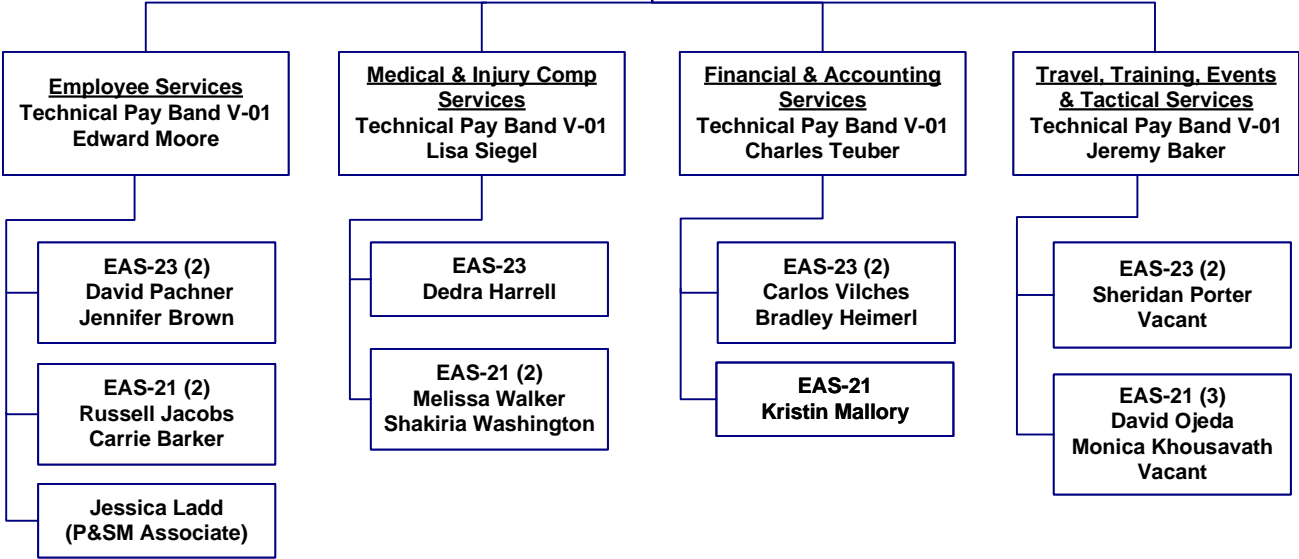
NOTE: Position levels are PCES unless noted.

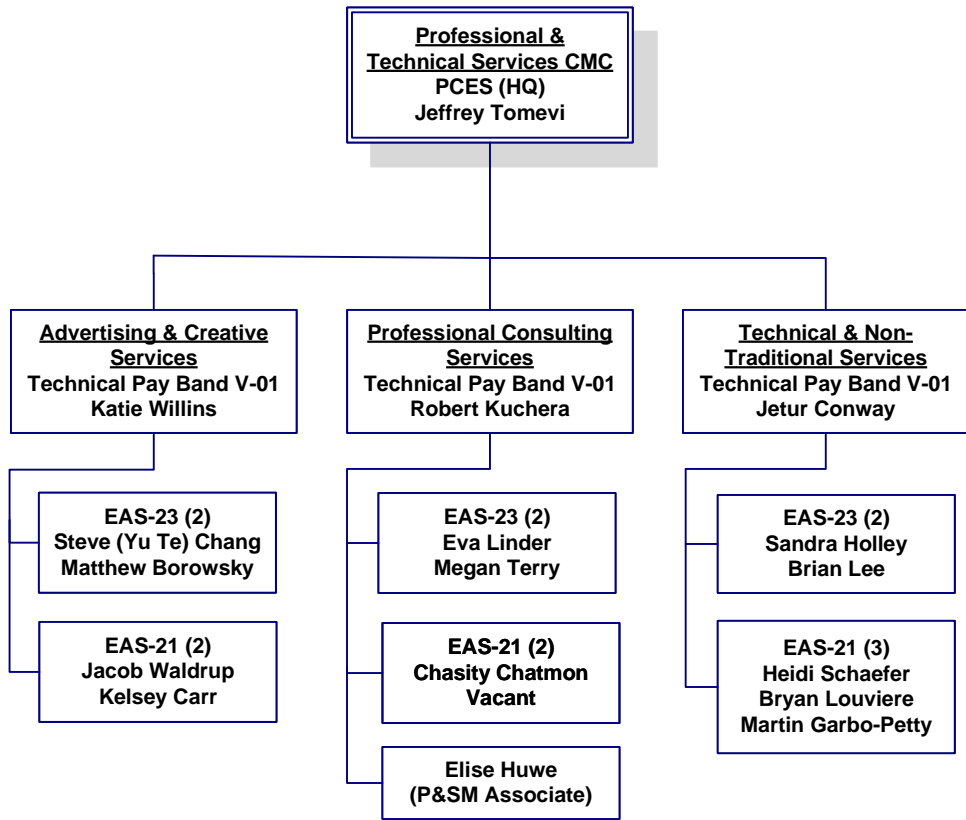
Effective 1/27/2024

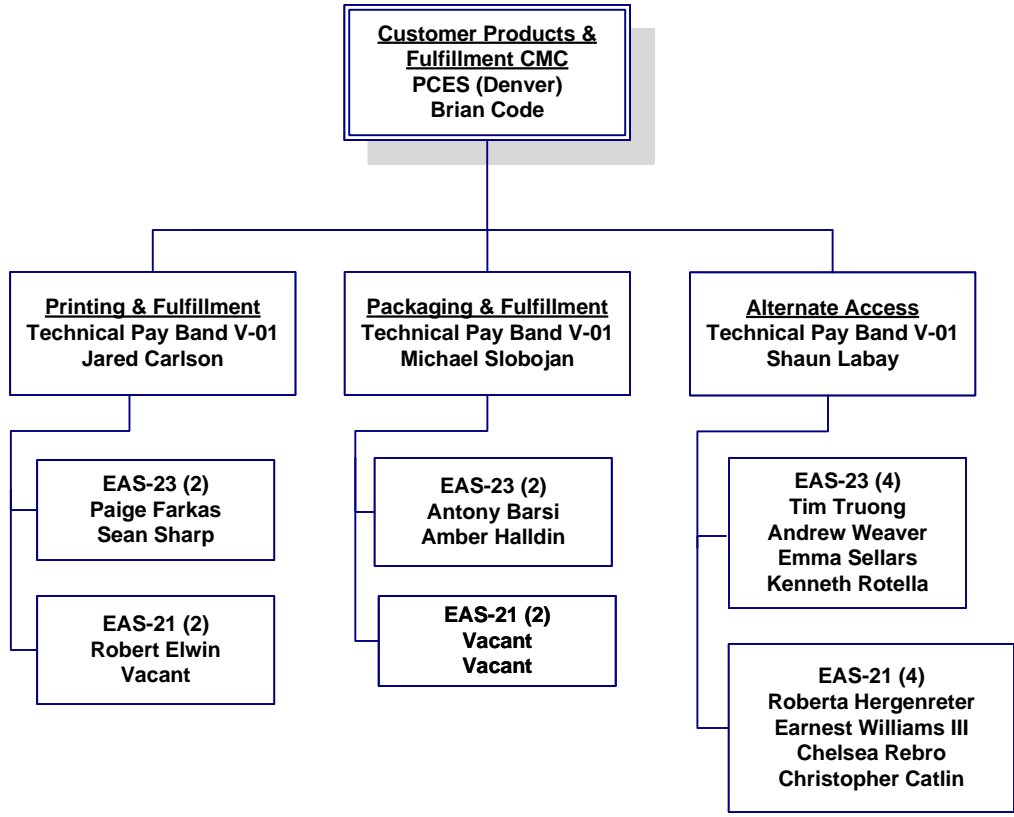
*Acting (A)
Incumbent (I)*

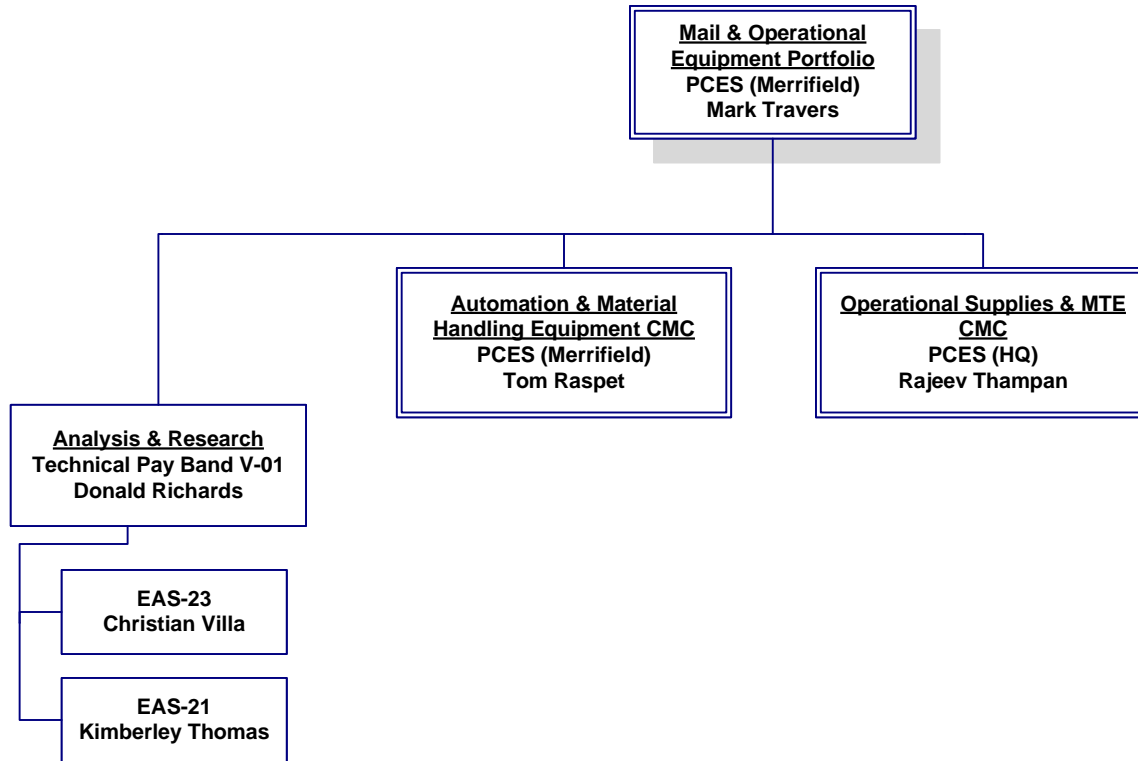


Employee, Financial & Tactical Services CMC
PCES (Denver)
Nathan Franklin

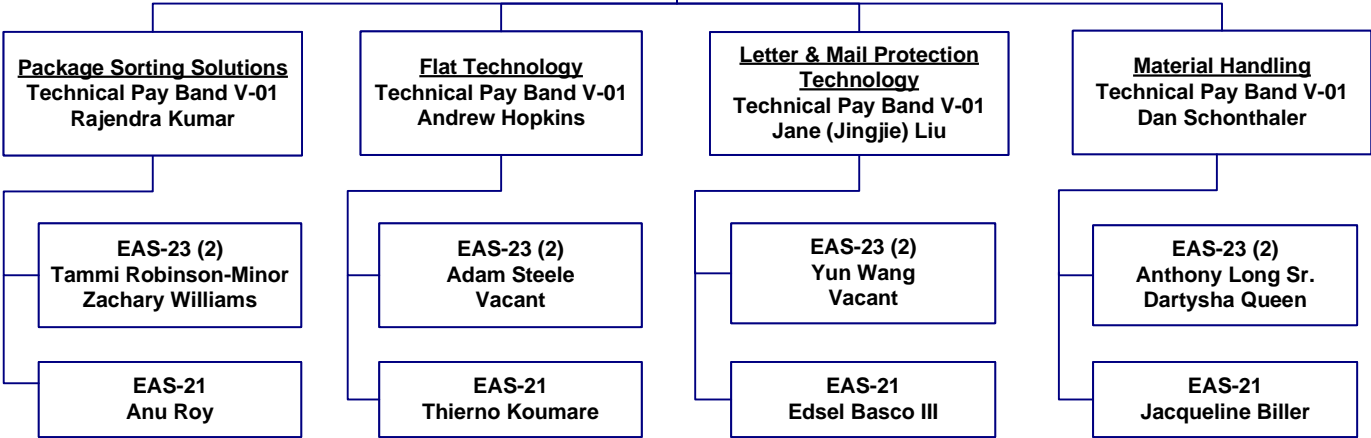


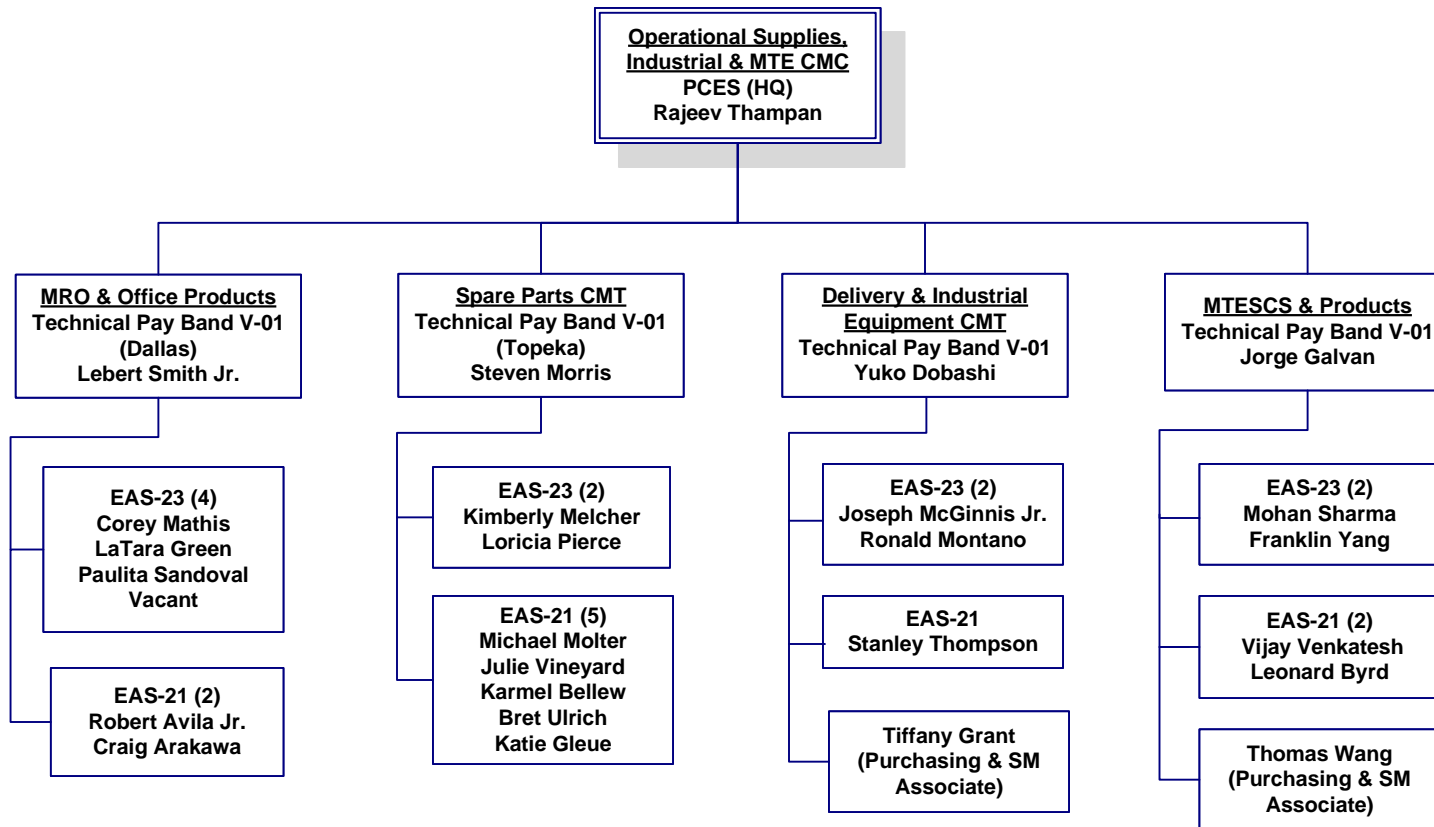


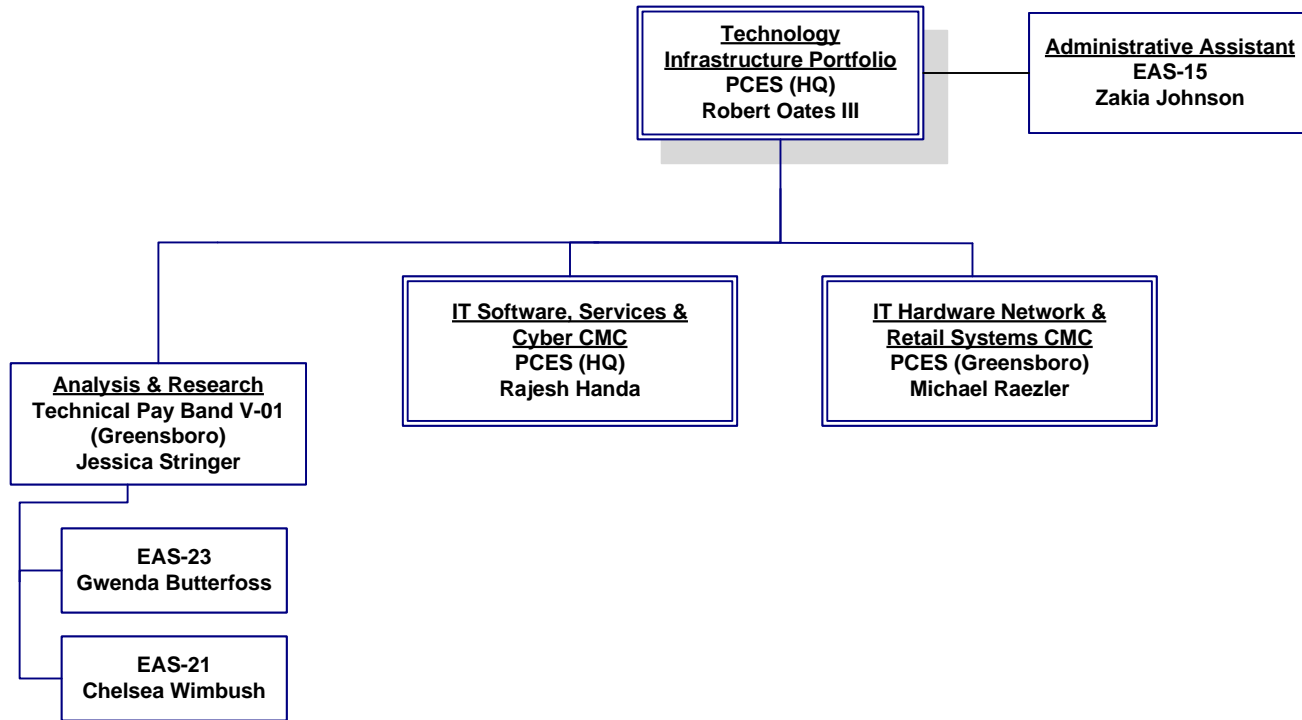


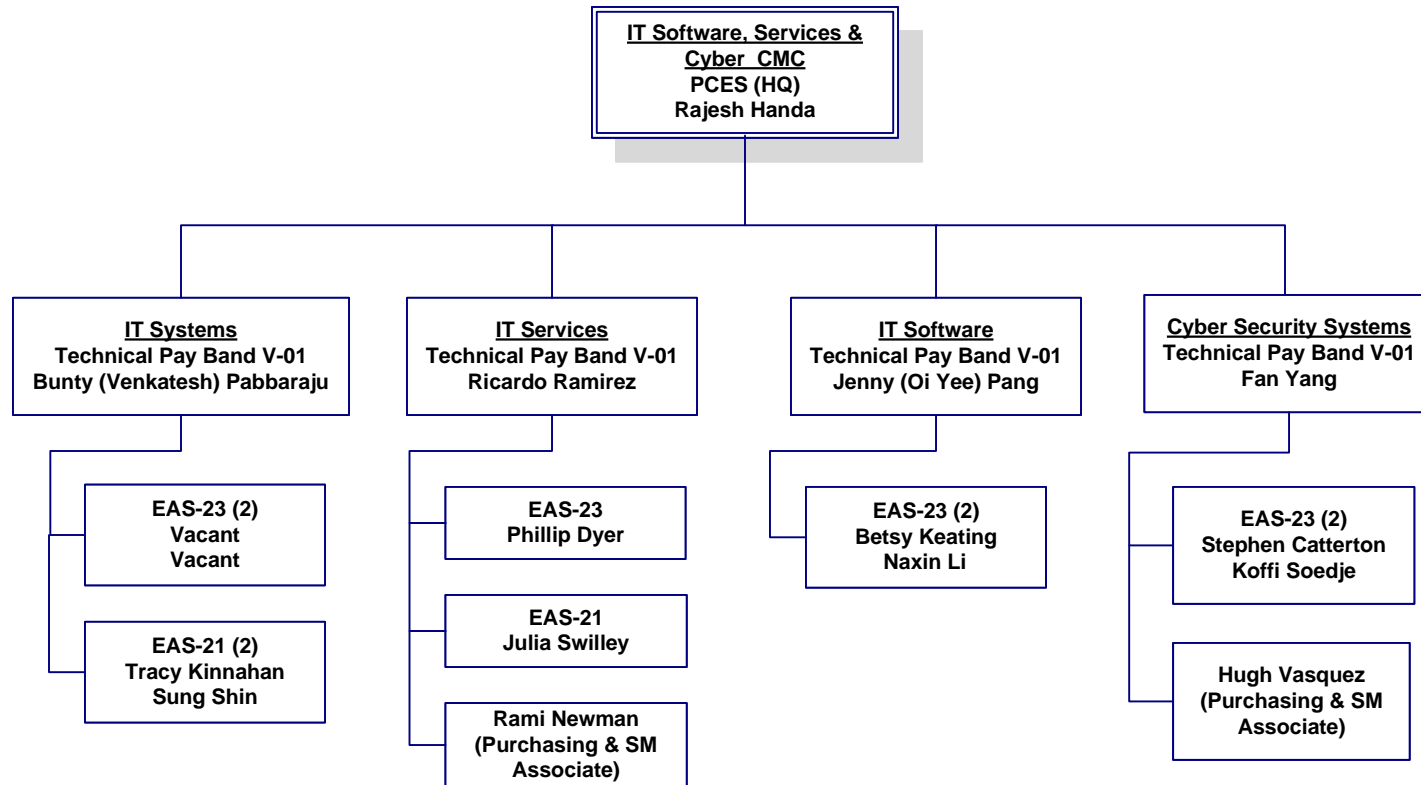


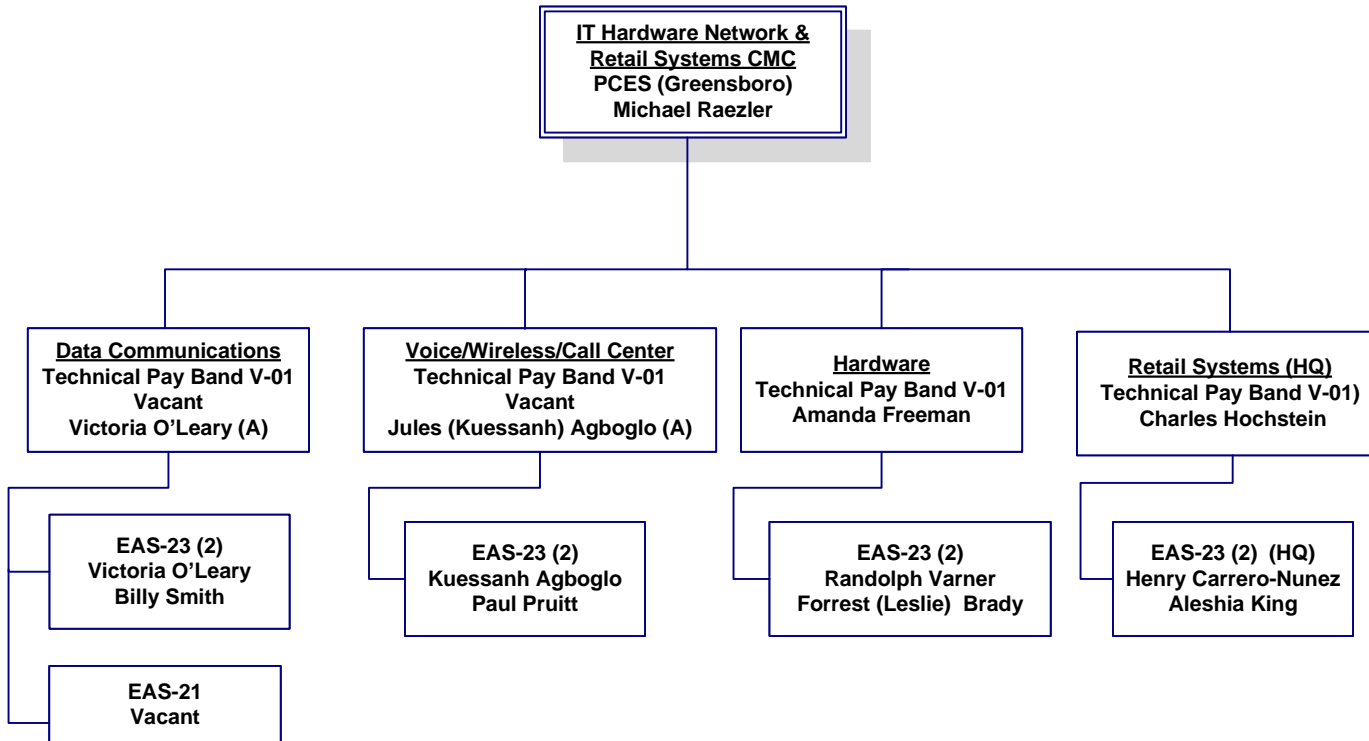
**Automation & Material
Handling Equipment CMC
PCES (Merrifield)
Tom Raspet Sr.**

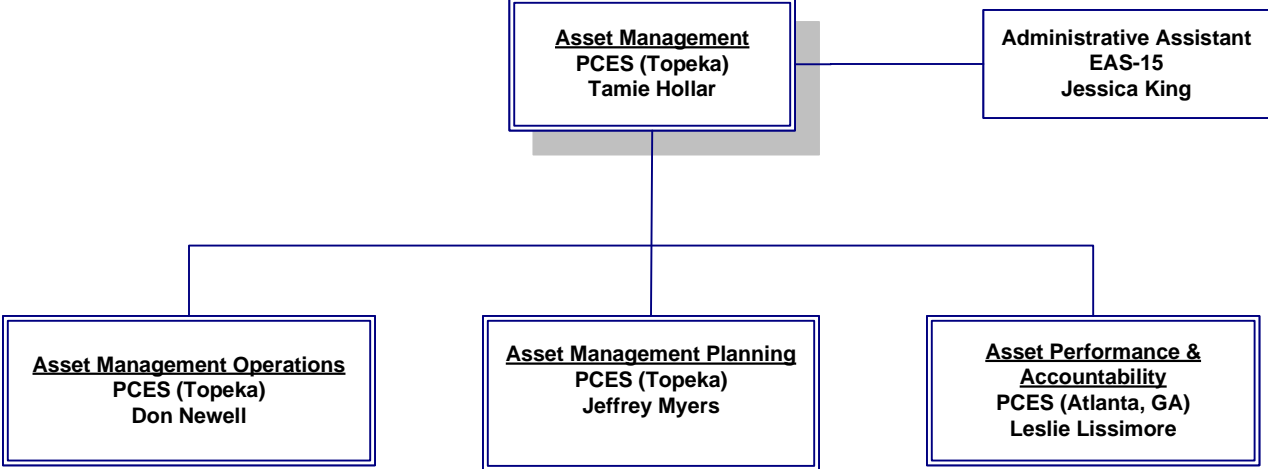


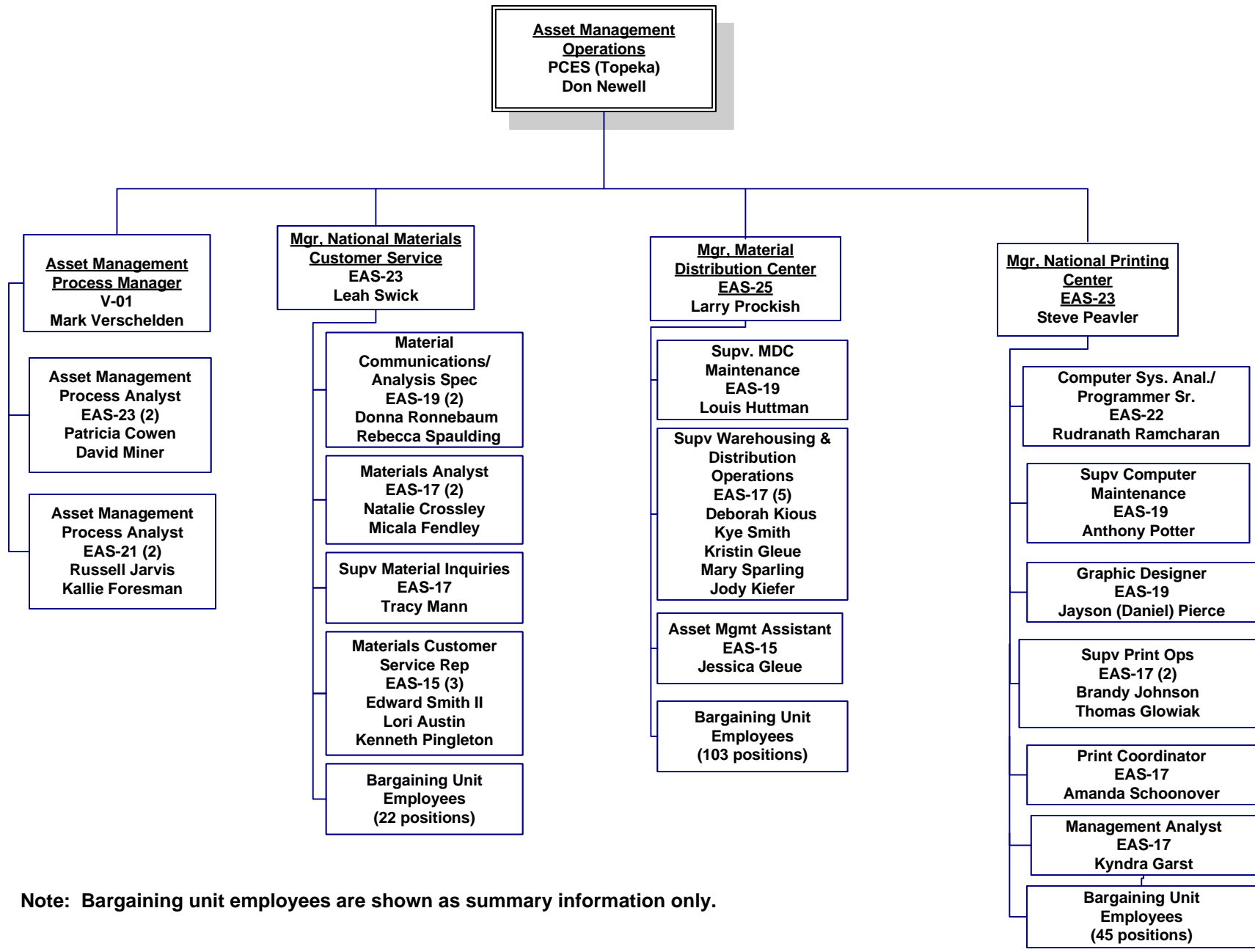






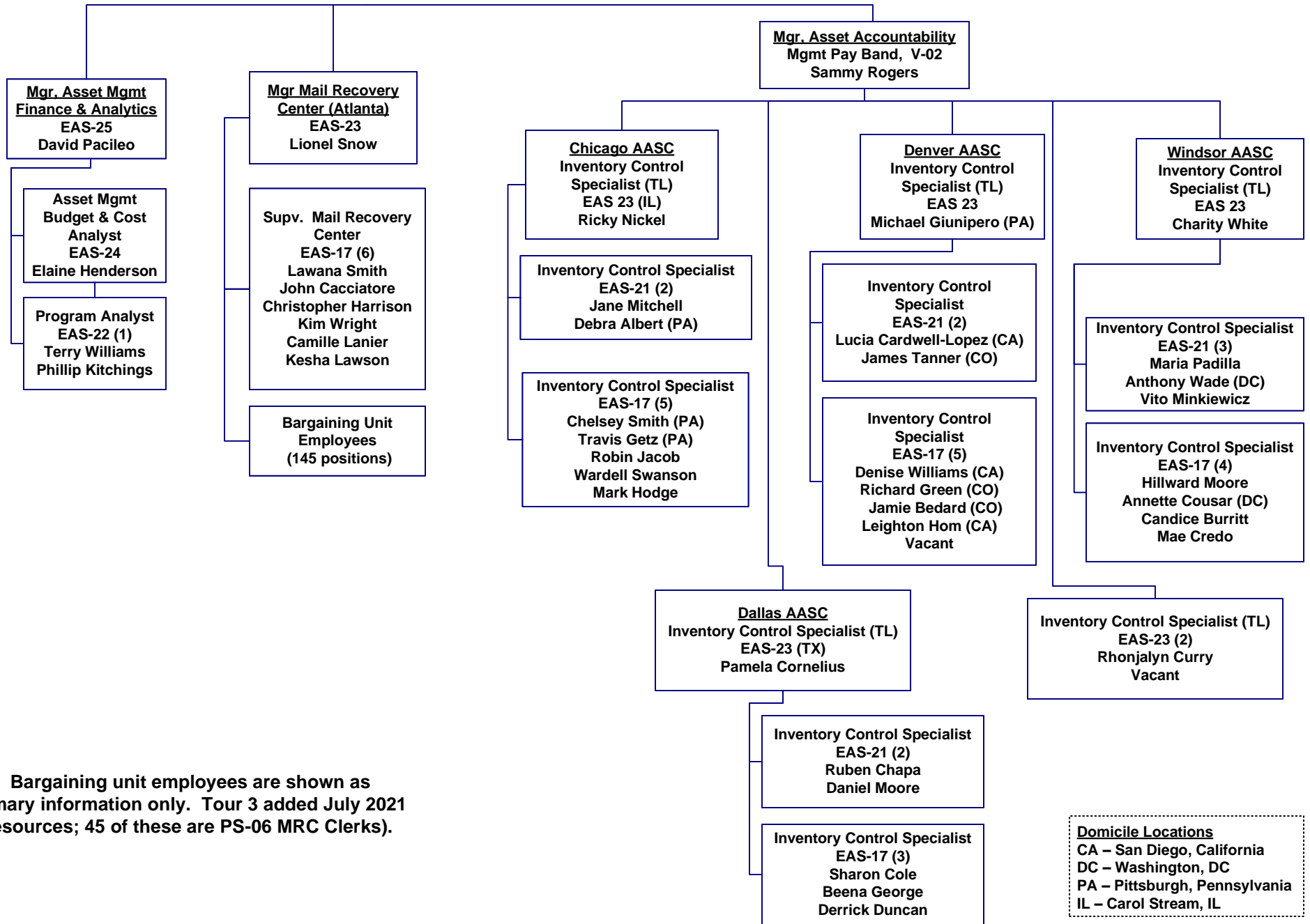






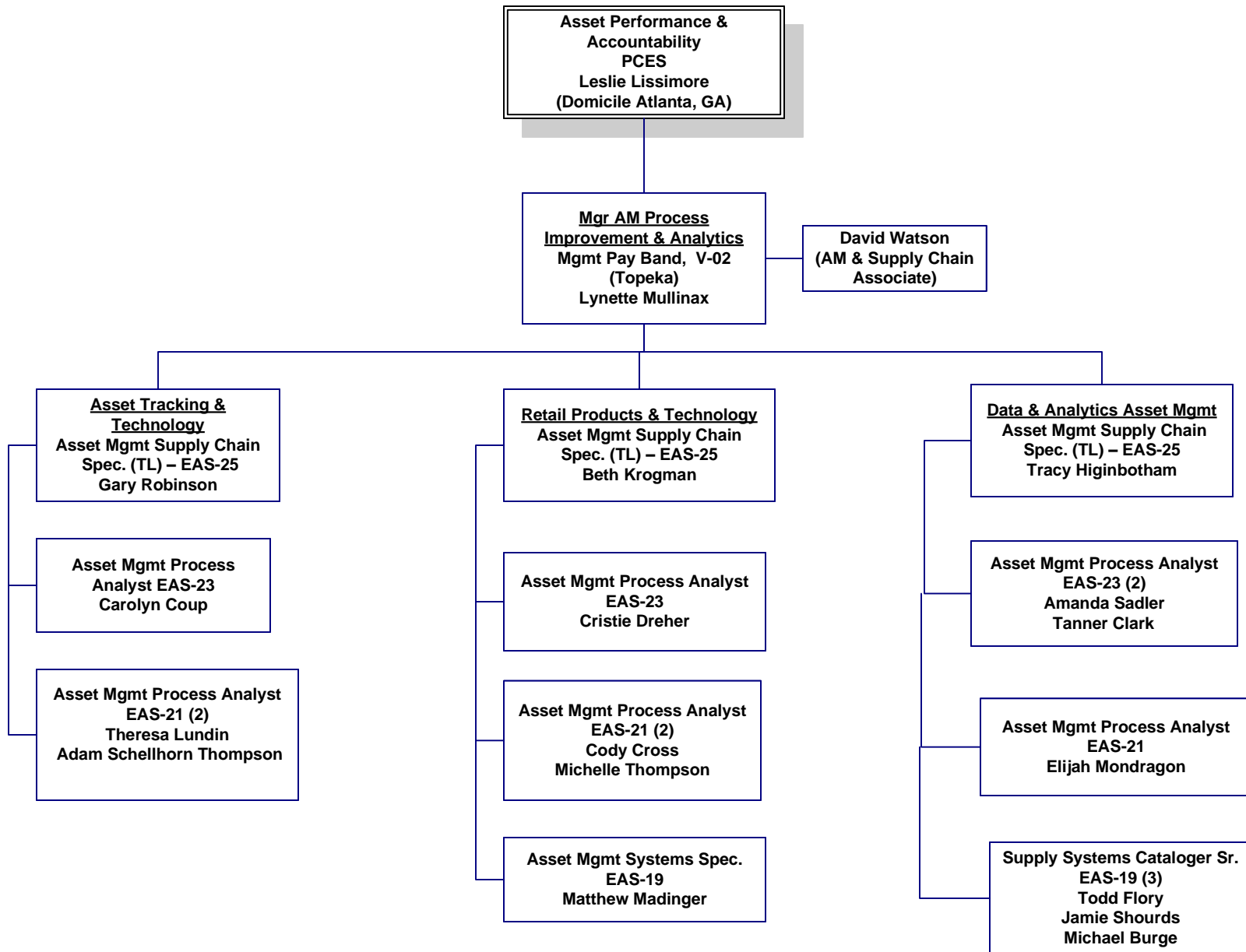
Note: Bargaining unit employees are shown as summary information only.

**Asset Performance & Accountability
PCES
Leslie Lissimore
(Domicile Atlanta, GA)**



Note: Bargaining unit employees are shown as summary information only. Tour 3 added July 2021 (48 resources; 45 of these are PS-06 MRC Clerks).

Domicile Locations
CA – San Diego, California
DC – Washington, DC
PA – Pittsburgh, Pennsylvania
IL – Carol Stream, IL



SM Infrastructure
PCES (HQ)
Nicholas Faiola

Policy, Compliance & Audit
Mgmt Pay Band V-02
Vacant
Susan Witt Petrowski (A)

FI, HR & PD
Mgmt Pay Band V-02
Colleen Smithner

PSSCs - (Windsor)
Mgmt Pay Band V-02
Scott Reynolds

Policy
Technical Pay Band V-01
Susan Witt Petrowski (I)
Peter LaMarca IV (A)

Compliance
Technical Pay Band V-01
Peter LaMarca IV (I)
Shelita Taylor (A)

Audit Mgmt & FOIA
Technical Pay Band V-01
Judy Weatherford

EAS-25
Training Coordinator
Kaycee Schleich

PSSC Windsor
PSSC TL EAS-25
Brian Eager

PSSC Denver
PSSC TL EAS-25
Rodney Jones

EAS-25
Policy Specialist
Shelita Taylor

EAS-23 (2)
Policy Specialist
Emmanuel Niba
Sereena Bush

EAS-23
Policy Specialist
Vacant

EAS-23
Budget & Fin. Analyst
Christian Wickline

Purch. Card Spec. II
EAS-23 (2)
Michelle Fox
Dinamonique Tapler

Purch. Card Spec. II
EAS-23 (2)
Linda Saletnik
Shawna Roberson

EAS-23
Policy Specialist
Steve Fazekas

EAS-21
P&SM Specialist
Olukayode (Kayode) Ogunmola

EAS-22
Program Analyst
Brenda Hunter

EAS-22 (2)
Program Analyst
Vacant

Purch. Card Spec. I
EAS-21 (5)
Caitlin Bonafilia
Joseph St John
Holly Pereira
Chris Rasmussen
Samara Grantham

Purch. Card Spec. I
EAS-21 (2)
Jung Um
Julie Dominguez

EAS-21
P&SM Specialist
Nicholas Panicucci

EAS-22
Admin Support Spec
Vacant

Purch. Card Spec.
EAS-19 (4)
Dolly Uthuppan
Holly Olson
Lorenda Loyd
Vacant

Purch. Card Spec.
EAS-19 (4)
Candace Disher
Vacant
Jaime Hernandez
Suzette Perry-Rogers

Director, SCM Strategies
PCES (HQ)
Donna Schoenbeck

**Technology, Data Integrity
& Tech Training**
Mgmt Pay Band V-02
M (Muhammed) Ovase

**SM Data Integrity
Reporting & Analysis**
Technical Pay Band V-01
Leif Ecker

**Stakeholder Outreach,
Analysis & Research**
Mgmt Pay Band V-02
Phil Theunissen

Sourcing & Contracting
Prog. Mgr. SCM
Solutions EAS-25
Derek Session

**Requisitions, Payments
& Supplier Relations**
Technical Pay Band V-01
Bill (William) Messer

P&SM Specialist
EAS-23
(Data Analysis &
Reports)
Sonji Young-Woods

Analysis & Research
Technical Pay Band V-01
Paul Ovchinnikoff

**Stakeholder Outreach &
Sustainability**
Technical Pay Band V-01
Elena Klawonn (A)
Vacant

SM Bus. Sys. Spec.
EAS-23
CAMS & eFMS
Dennis Renoll

SM Bus. Sys. Spec.
EAS-23
iSupplier
Wintana Yemane

SM Data Specialist
EAS-23
(Data Analysis
Quality)
Robert Catlett III

P&SM Specialist
EAS-23
Lilian Sotomayor

P&SM Specialist
EAS-23
(Supplier Outreach/
PSC)
Joanne Redd

SM Bus. Sys. Spec.
EAS-23
eSourcing - FBO
Darline Pascal

SM Bus. Sys. Spec.
EAS-23
eBuyPlus
Richard Harris Jr.

SM Data Analyst
EAS-21
(Data Analysis
Quality)
Calvin Jones

P&SM Specialist
EAS-21
Elena Klawonn

P&SM Specialist
EAS-23
(SPA/
Communications)
Tomecca Russell

SM Bus. Sys. Spec.
EAS-23
TCSS & SCR
Donna Parks

SM Bus. Sys. Analyst
EAS-21
SCRMS
Wail Elatta

P&SM Specialist
EAS-21
Vacant

P&SM Specialist
EAS-21
(Communications)
Jacqueline Carter